

Rapsodia na klarnet i fortepian op. 19

Clarinetto in Sib

J.F. Wojciechowski

cadenza ad libitum

$\text{♩} = c. 126$

f

5 *tr*

$\text{♩} = 45$ *accel.* $\text{♩} = 90$ $\text{♩} = 45$ *accel.* $\text{♩} = 90$

f *mp* *p* *mp*

9 $\text{♩} = 45$ *accel.* $\text{♩} = c. 126$ $\text{♩} = 45$ *accel.*

mf *f* *f* *ff*

13 $\text{♩} = c. 126$

sp *p* *mf*

17 *f* *tr*

20 $\text{♩} = 45$ *accel.* $\text{♩} = 90$

f *mp* *p*

23 $\text{♩} = 45$ *accel.* $\text{♩} = 90$ *rall.*

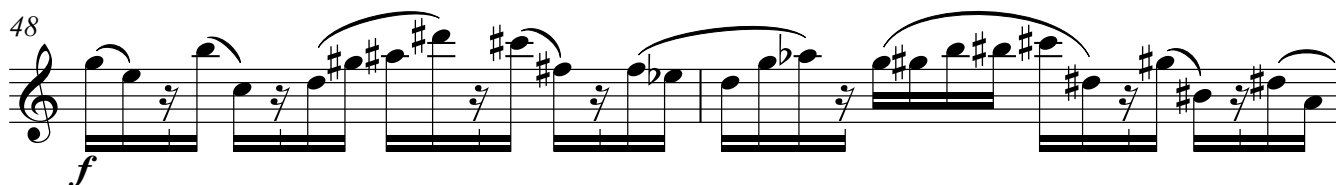
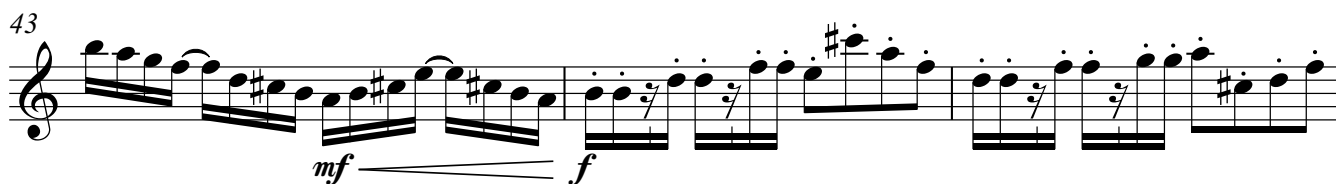
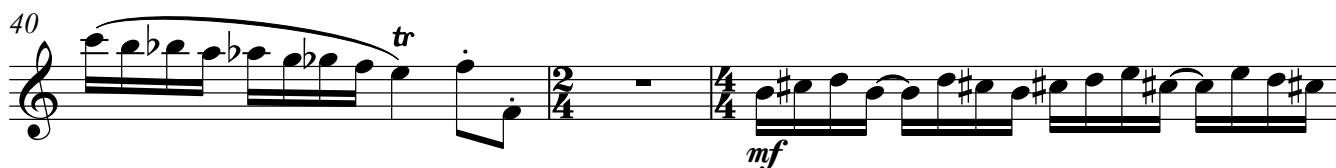
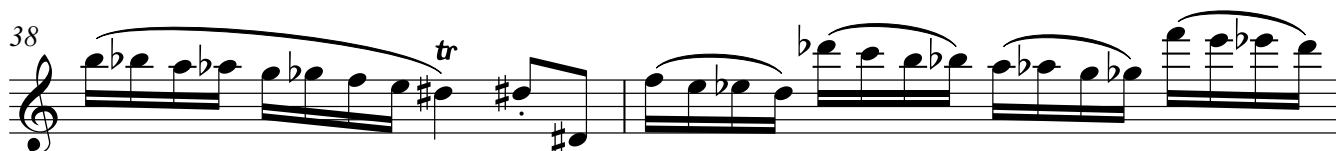
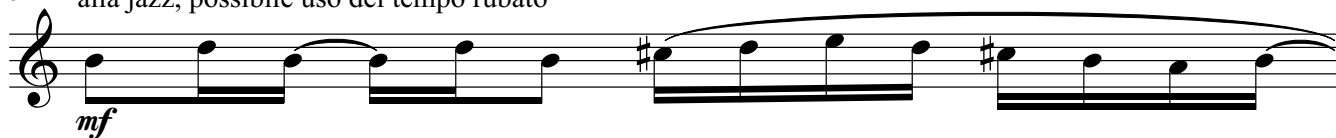
mp *mf*

25 $\text{♩} = 45$ $\text{♩} = 126$ *rall.* $\text{♩} = 90-99$

f *ff* *sp* *mp* *ff*

Znaki chromatyczne odnoszą się **jedynie** do nut, przy których stoją.
The accidentals apply **only** to the notes they precede.

31 alla jazz, possibile uso del tempo rubato



62

mp *mp*

65

mf *mf* *mf* *mf* *mp*

68

mp *f*

72

f *mp* *mf* *f*

Mk 8, 22-26

76

mf *quasi Amelia*

79

f

82

f

Clarinetto in Sib

84

86

88

89

90

91

92

94

96

98

f

3

3

3

3

Detailed description: This page contains ten staves of musical notation for a Clarinet in B-flat. The music is written in treble clef with a key signature of one flat (B-flat). Measures 84-85 feature a melodic line with eighth and sixteenth notes, followed by rests. Measures 86-87 continue with a similar melodic pattern. Measures 88-91 consist of a series of eighth-note chords, some beamed together. Measure 92 features a rapid sixteenth-note scale. Measures 93-95 show a melodic line with eighth notes and rests. Measure 96 continues the melodic line. Measures 97-98 feature triplets of eighth notes, marked with a '3' below the staff. A dynamic marking of *f* (forte) is present at the beginning of measure 94.

100 *f* 3 3 3 3 *f* 3 3 3

103 *ff* 6 6 3

104 6 6 3

105 6 3 3

106 6 3 3 6 3

108 6 3 *mf* *mf*

110 *f* *f* *mf* *mf*

112 *f* *f* *mf* *f*

114 *mf* *p* *mf*

116 *mf*

Detailed description: This page contains the musical notation for measures 100 through 116 of a piece for Clarinet in B-flat. The notation is written on a single staff in treble clef. Measures 100-101 feature eighth-note runs with triplets and a forte (*f*) dynamic. Measure 102 has a fortissimo (*ff*) dynamic and a descending sixteenth-note scale. Measures 103-107 continue with descending sixteenth-note scales and triplet patterns. Measure 108 introduces a mezzo-forte (*mf*) dynamic and a triplet of eighth notes. Measures 109-111 show eighth-note patterns with varying dynamics including *f* and *mf*. Measure 112 features a dynamic shift from *f* to *mf* and back to *f*. Measure 113 has a mezzo-forte (*mf*) dynamic. Measure 114 includes a piano (*p*) dynamic section. Measure 115 is marked mezzo-forte (*mf*). Measure 116 begins with a mezzo-forte (*mf*) dynamic and continues with eighth-note patterns.

